

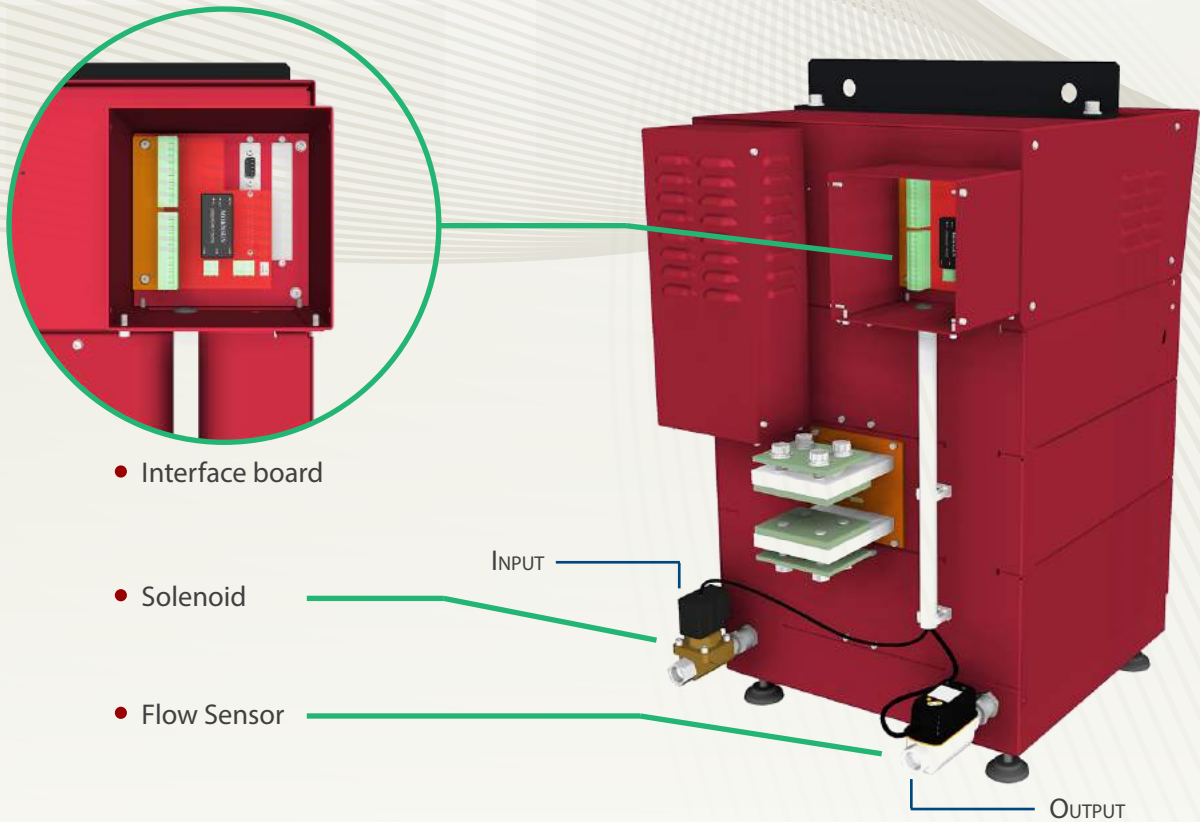
Water Flow Sensor and Solenoid

Water cooled rectifier optional for low water flow rate alarm

FPN: **WFS20A** (flow rate: up to 20 L/min)

WFS40A (flow rate: 20 to 40 L/min)

- Features:
 - adjustable Flow Sensor to assure minimum required flow rate
- Benefits:
 - assures minimum water flow rate
 - solenoid can be used to stop circulation of cold water when rectifier is in stand-by, thus preventing potential condensation



- Flow Sensor and Solenoid are placed outside the rectifier for an easy assistance and not connected to the rectifier at the time of shipping. Wiring and Interface Board (protected by metal box) are already installed on the rectifier.

- Main components:

- INTERFACE BOARD

FPN: IOW20B

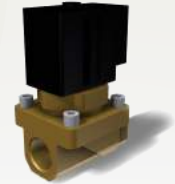
It is used for powering the solenoid and handling the flow sensor signal for low water flow rate alarm. This board is connected to the 25pin D-sub connector of CPU through the corresponding female connector on PCB. On the board, screw connectors CN1/CN2 can be used for RS485 network (with termination, pull-up and pull-down resistors activable by dip switch).



- SOLENOID

FSN: 8630-40-001

(Brand: SMC | P/N: VXZ242FGA): servo-solenoid, 24VDC, 7W (low power consumption), NC, G 1/2", brass body.



- FLOW SENSORS

FSN: 8630-40-007

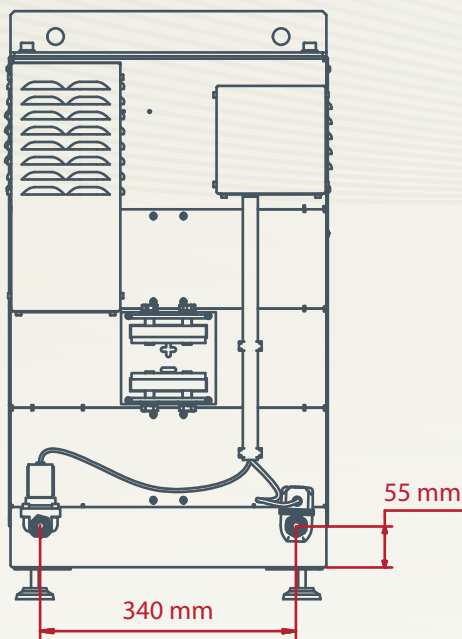
(Brand: IFM | P/N: SV4200): with integrated display, range 1 to 20L/min., G 1/2", 24Vdc, PNP.

FSN: 8630-40-006

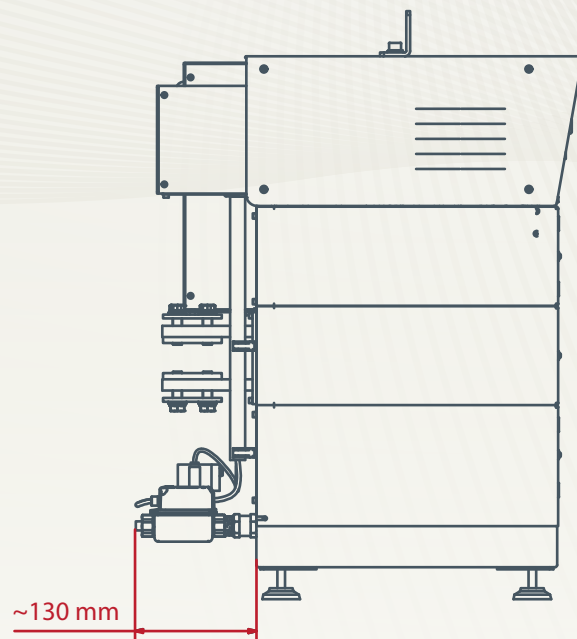
(Brand: IFM | P/N: SV5200): with integrated display, range 2 to 40L/min., G 1/2", 24Vdc, PNP.



Back View



Side View



- Available only on Q500 rectifiers, single tower or multitower system.
- Compatible with Profibus-DP, Devicenet, Profinet and Ethernet/IP communication adapters. Not compatible with Analogue Interface (ANL002).
- Flow Sensor and Solenoid can be sold together or separately.